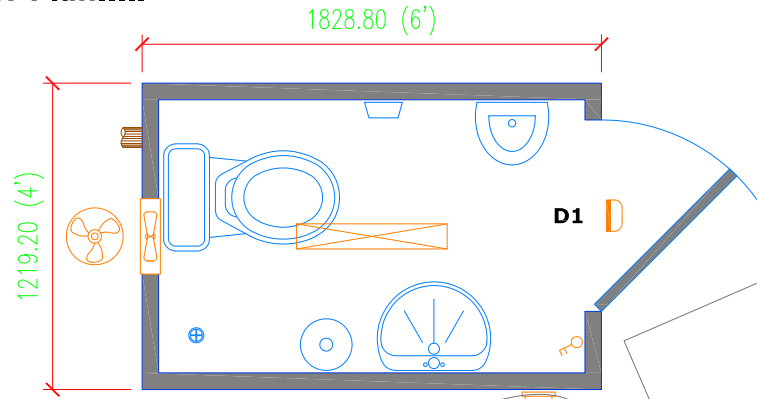
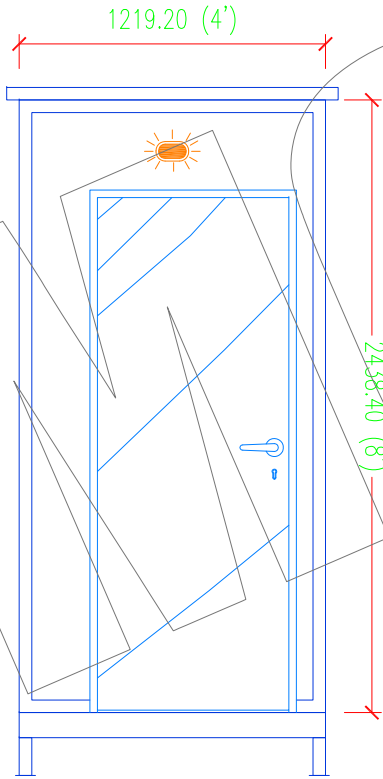


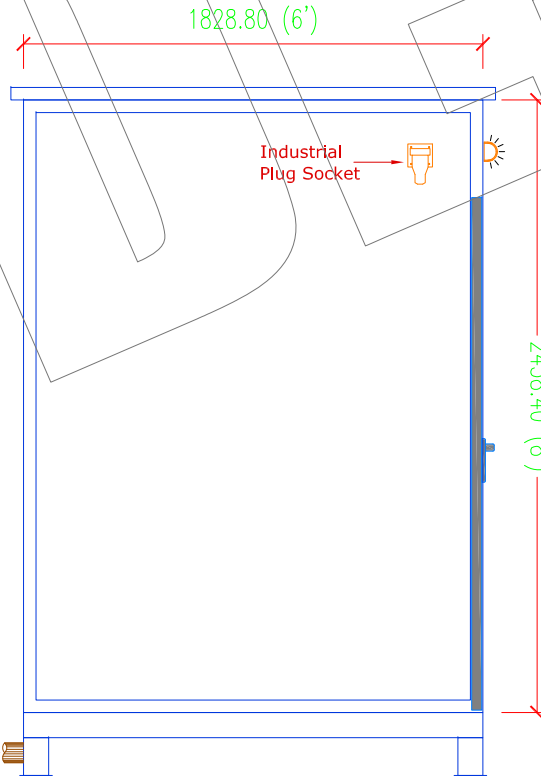
Floor Plan.....



Elevation Front.....



Elevation Side.....



Legend

	Double Gang Switch
	32Amps Single Phase Plug-in Socket for Power Connection
	Bulkhead Light
	15cm Exhaust Fan with auto shut-off louvers
	1x36W Single Fluorescent Light Fixture

Doors

D1	204cm x 76.2cm Flush Door, 40mm semi-solid, stained teak veneer finish with Meranti Lipping & door frame fitted with 3 brass hinges, lever handles, rubber door stop & 'Solex' Knob lock with 3 keys
-----------	--

Fittings & Equipments

- 05ea. Western WC with Flushtank & Flexible Washing Hose
- 01ea. Wash Basin with flick mixer
- 01ea. Urinal
- 01ea. Hand Towel Dispenser
- 01ea. Tissue Paper Holder

CONTRACTOR:

MODEST COMPANY

P.O.BOX : 5741
DUBAI, U.A.E
JEBEL ALI Free Zone

TEL: 04-8814786
FAX: 04-8812786



CLIENT :

Project Title:

6' x 4'
Portable Toilet Unit

Date: 16-01-12

Drawing No:

PO202

Size: A4

Drawing Name:

Floor Plan + Elevations

Original Scale: n.t.s.

Revision:

Designed: mhz.