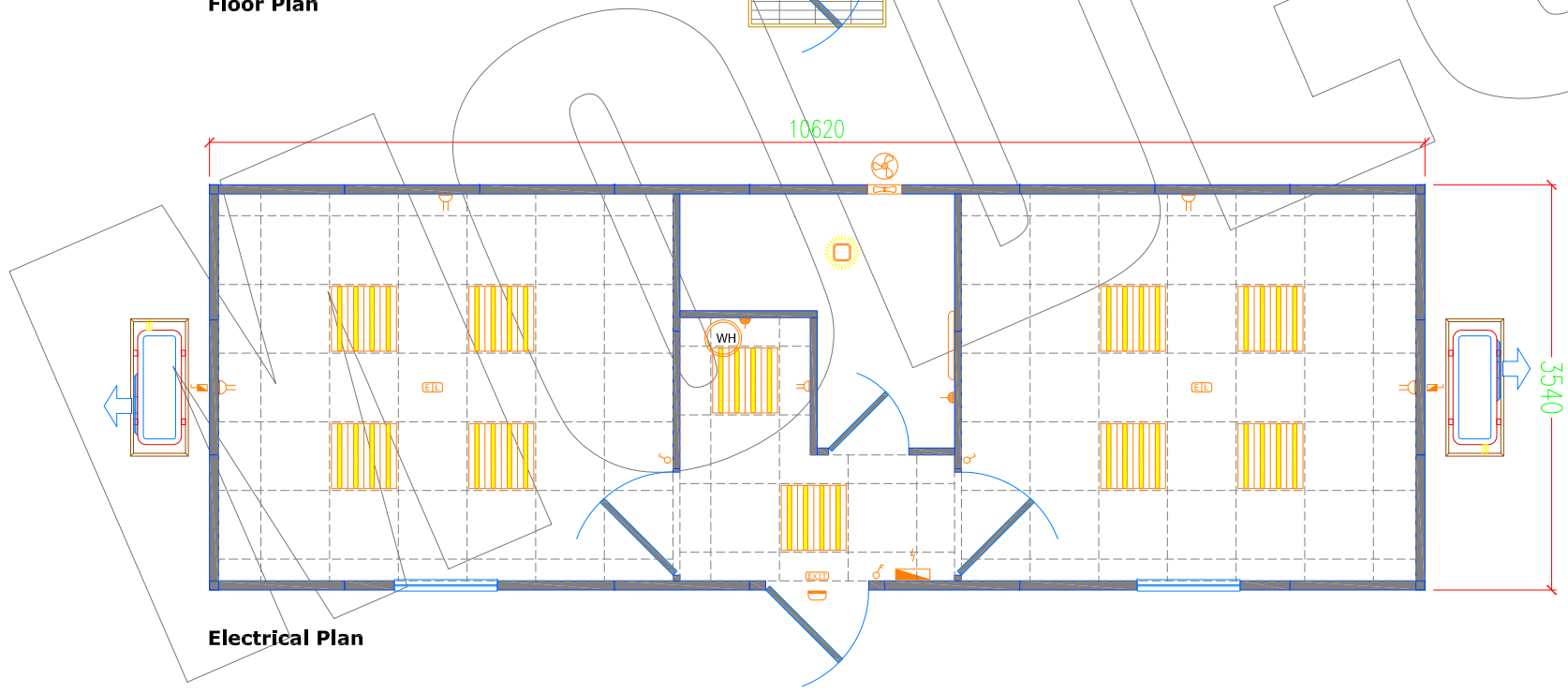


**Floor Plan**

Doors / Window	
D1	210cm x 90cm aluminum-framed, white powder-coated fitted with lever handles 40x50cm view pane fitted with clear safety wired-glass, cylinder lock with 3 keys, door closer, weather-seals, door brush
D2	205cm x 90cm Flush Doors, 40mm semi-solid, stained teak veneer finish with Meranti flpping & door frame, fitted with 3 brass hinges, aluminum louvers for ventilation, rubber door stop & 'Unfon' knoblock with 3 keys
D3	180cm x 70cm Flush Panel Doors / water proof fitted with bathroom indicator lock
W1	90cm x 90cm Aluminium framed window with hinged flap, weather seals, 18mm hermetically-sealed double glazing with reflective mirror glass with venetian blinds

- Fittings & Equipments**
- 1ea. GRP Fibreglass Shower Tray with vinyl curtain
  - 1ea. Western WC with Flushtank & Flexible Washing Hose
  - 1ea. Wash Basin with flick mixer
  - 1ea. Water Heater (Capacity 50 Ltrs.)
  - 2ea. Venetian Blinds
  - 2ea. 2-Tons/24000 Btu-hr. split-type Aircond. unit 'Rheem'
  - 1ea. St.Steel Sink/Single Bowl with high-neck Mixer Tap

LEGEND	
	Single, Double Gang Switches
	13A Double Switched Socket
	15A Single Switched Socket
	32A Weatherproof AC Isolator
	Bulkhead Light IP54
	Non-Maintained Fire Exlt Light (1x8W)
	Non-Maintained Emergency Light (2x8W)
	4x18w Recessed Fluorescent Light Fixture with Aluminium Reflective Louvers
	2x26W Energy saving Down Light, Mirror Finishing
	Distribution Panel
	15cm Exhaust Fan with auto shut-off louvers
	Indoor A/C Unit - Wallmounted
	Aircon. Condenser Unit
	Water Heater 50 Ltrs.



**Electrical Plan**

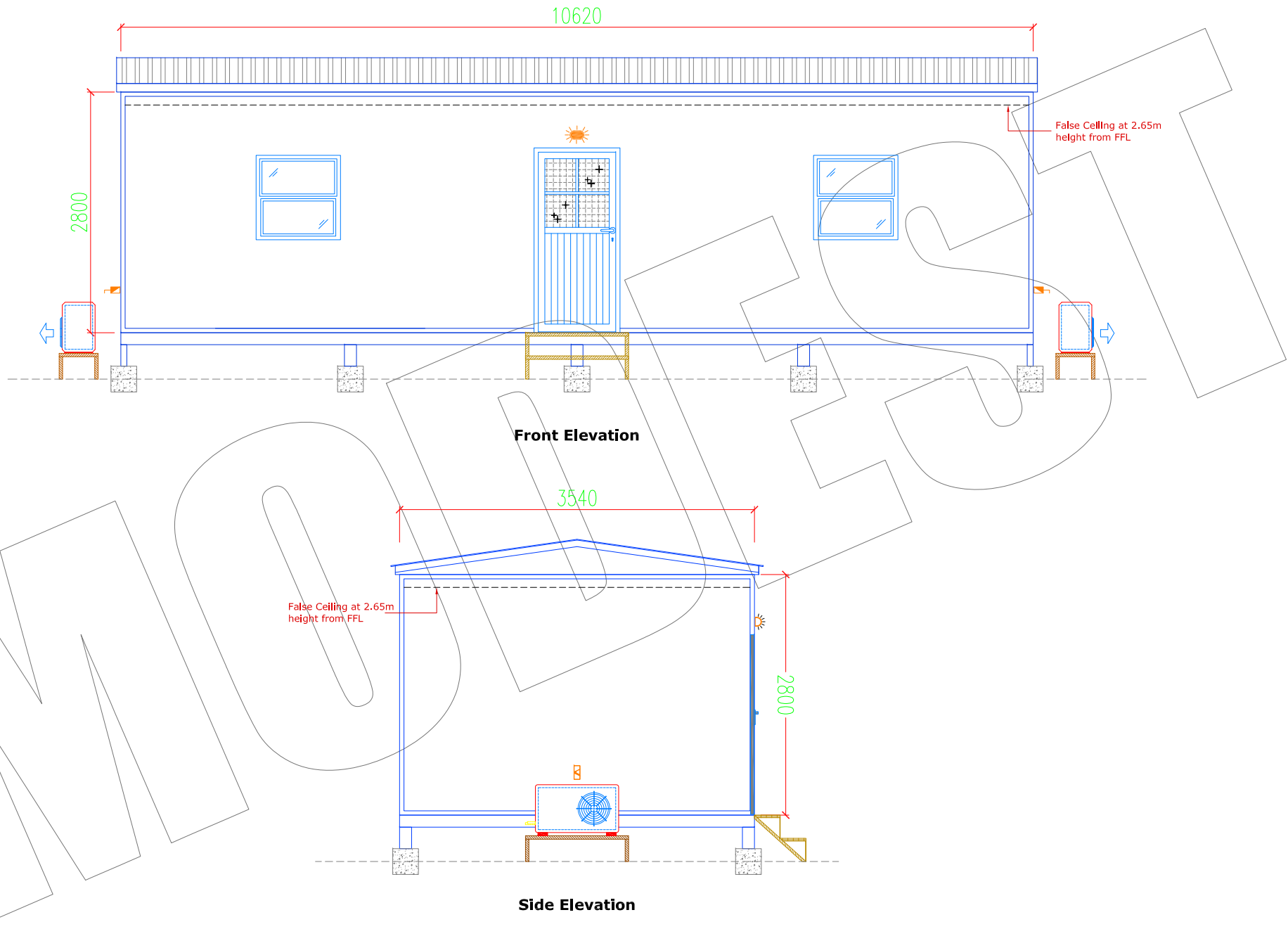
CONTRACTOR:  
**MODEST COMPANY**  
P.O.BOX : 5741  
DUBAI, U.A.E  
JEBEL ALI Free Zone  
TEL: 04-8814786  
FAX: 04-8812786



CLIENT :

Project Title: 36'x12'  
2 Room Toilet, Shower & Pantry Cabin  
Drawing Name: Floor + Electrical Plan

Date: 17-07-11  
Size: A4  
Original Scale: n.t.s.  
Designed: mhz.  
Drawing No: **PA135-01**  
Revision:



SUPPLIER :

MODEST COMPANY

P.O.BOX : 5741  
DUBAI, U.A.E  
JEBEL ALI Free Zone

TEL: 04-8814786  
FAX: 04-8812786



CLIENT :

Project Title:

36'x12'  
2 Room Toilet, Shower & Pantry Cabin

Date: 17-07-11

Drawing No:

Size: A4

PA135-02

Drawing Name:

Elevations

Original Scale: n.t.s.

Revision:

Designed: mhz.



PA 100

