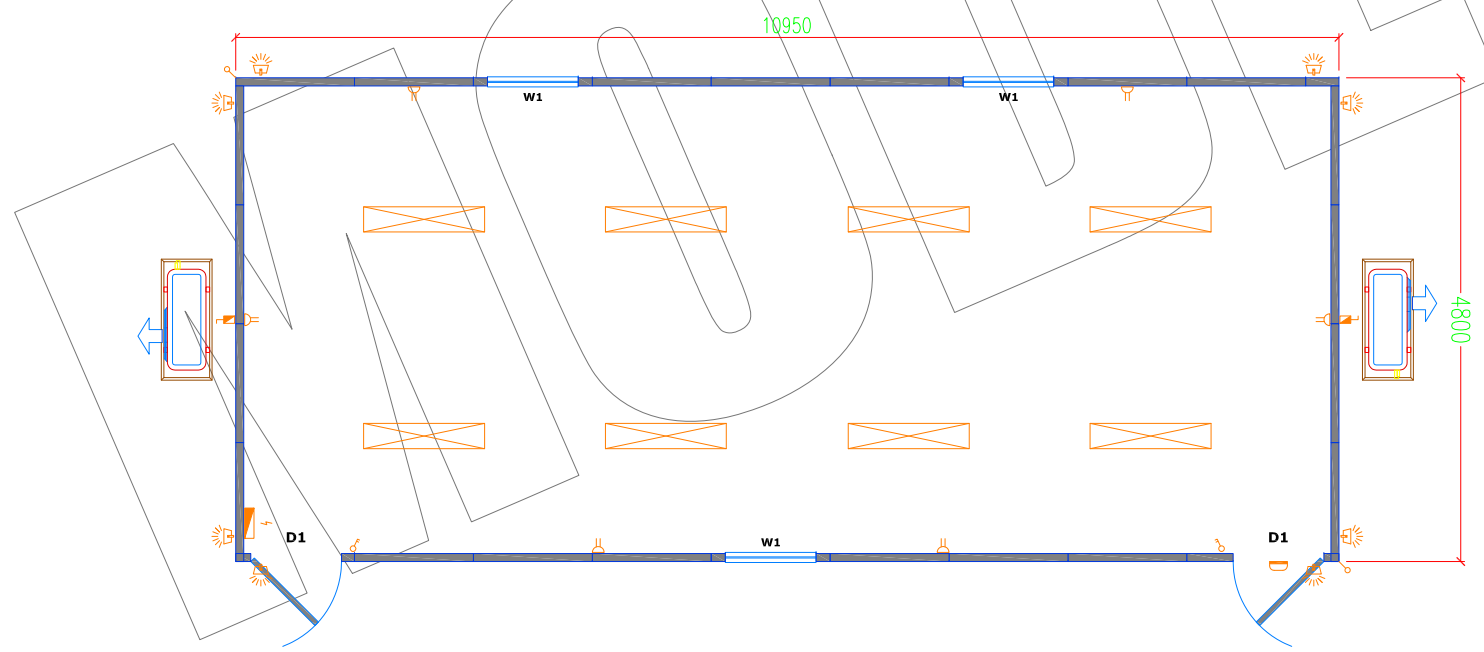




Floor Plan

Doors / Window	
D1	210cm x 90cm Flush Doors, 40mm semi-solid, stained teak veneer finish with Meranti lipping & door frame, fitted with 3 brass hinges, rubber door-stop & 'Union' knoblock with 3 keys
W1	90cm x 90cm Aluminium framed window with hinged flap, weather seals, 18mm hermetically-sealed double glazing with reflective mirror glass with venetian blinds
Fittings & Equipments	
Zea. 2-Tons/24000 Btu-hr. split-type Aircond. unit 'Rheem'	



Floor Plan

LEGEND	
	Single, Double Gang Switches
	13A Double Switched Socket
	32A Weatherproof AC Isolator
	Bulkhead Light IP54
	300W Halogen Light controlled by Photo Cell
	Non Maintained Fire Exit Light (1x8W)
	Non-Maintained Emergency Light (2x8W)
	2x36W Double Fluorescent Light Fixture
	Distribution Panel
	Indoor A/C Unit - Wallmounted
	Aircon. Condenser Unit

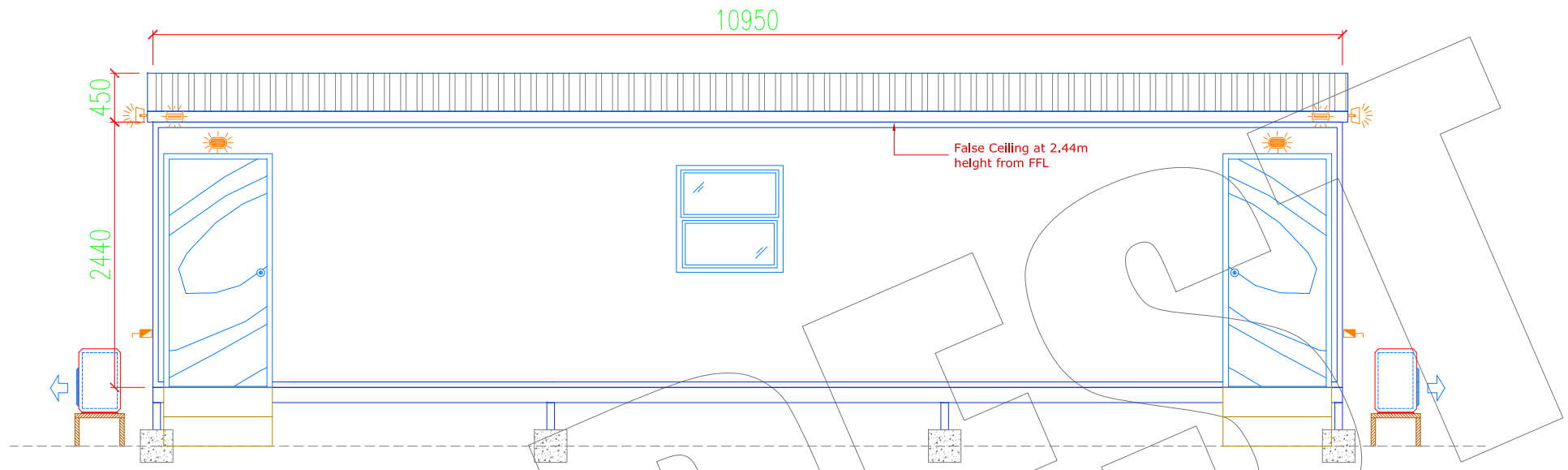
CONTRACTOR:
MODEST COMPANY
P.O.BOX : 5741
DUBAI, U.A.E
JEBEL ALI Free Zone
TEL: 04-8814786
FAX: 04-8812786



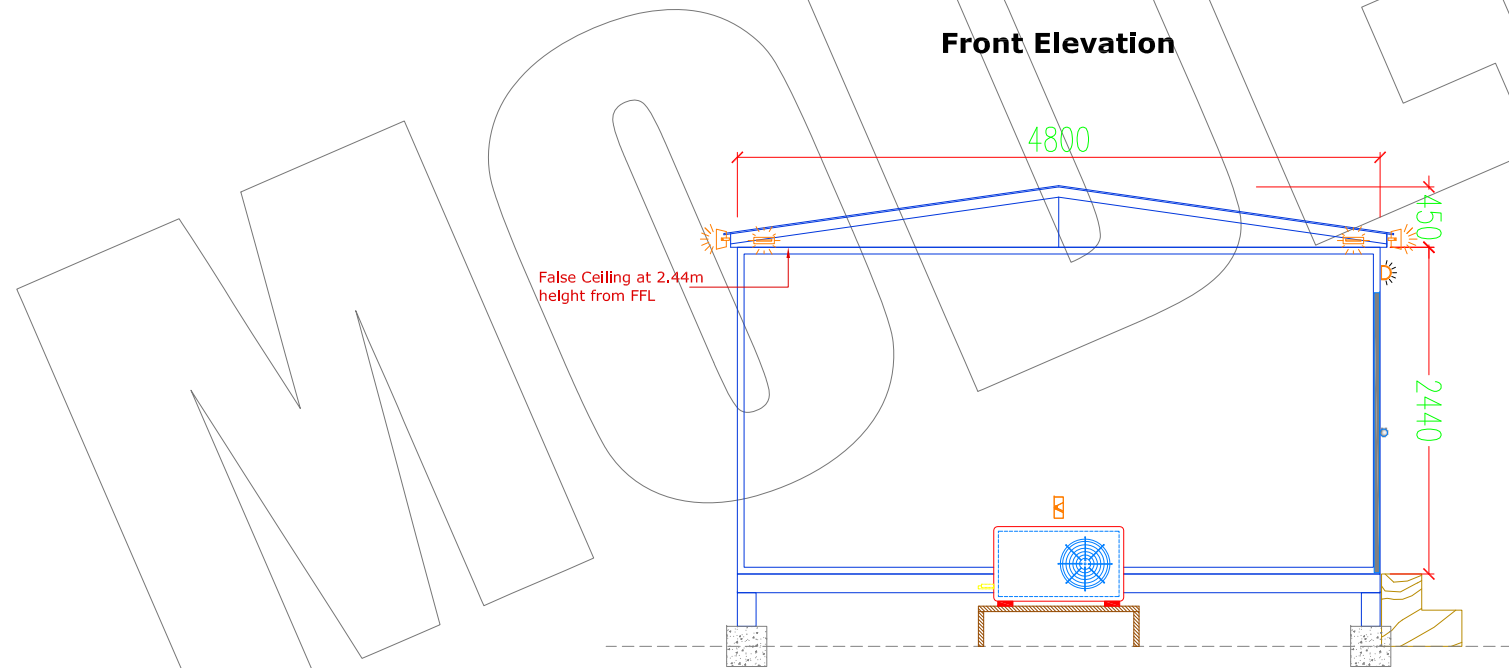
CLIENT :

Project Title: 36.5' x 16'
Open Plan Office Cabin
Drawing Name: Floor + Electrical Plan

Date:	17-07-11	Drawing No: PO103-01
Size:	A4	
Original Scale:	n.t.s.	Revision:
Designed:	mhz.	



Front Elevation



Side Elevation

SUPPLIER :

MODEST COMPANY

P.O.BOX : 5741
DUBAI, U.A.E
JEBEL ALI Free Zone

TEL: 04-8814786
FAX: 04-8812786



CLIENT :

Project Title:

36.5' x 16'
Open Plan Office Cabin

Drawing Name:

Elevations

Date:

17-07-11

Size:

A4

Original Scale:

n.t.s.

Designed:

mhz.

Drawing No:

PO103-02

Revision:

