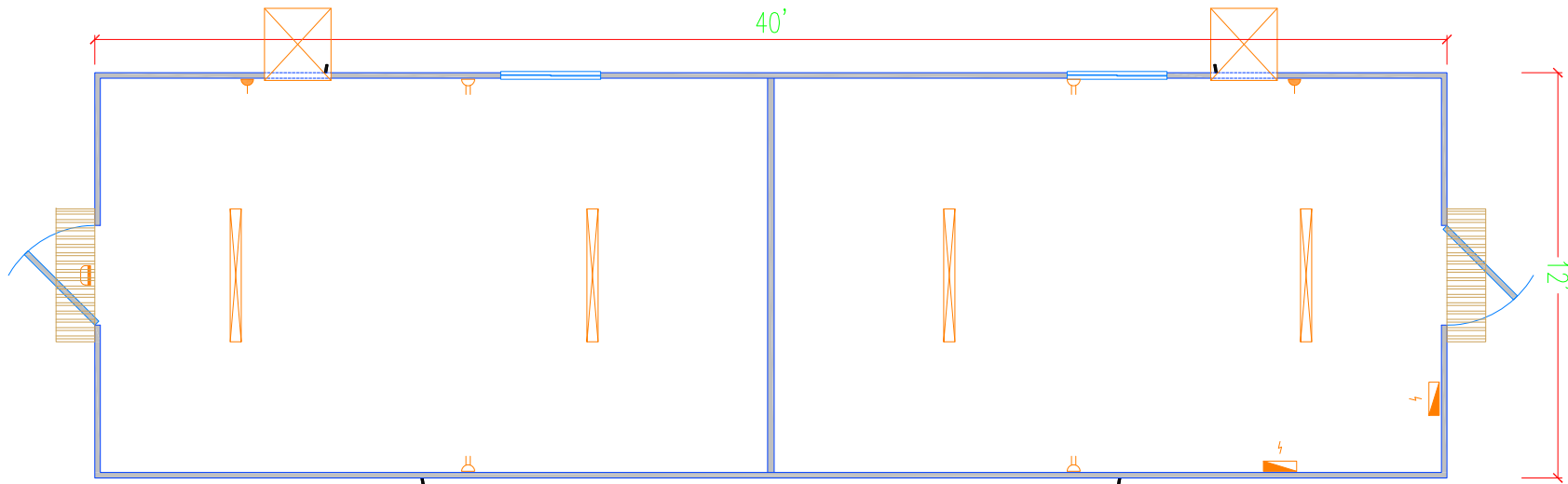


Floor Plan.....

Doors / Window	
D1	210cm x 90cm Flush Doors, 40mm semi-solid, stained teak veneer finish with Meranti lipping & door frame fitted with 3 brass hinges, lever handles, rubber door stop & 'Solex' lock with 3 keys
W1	900mmW x 900mmH aluminium framed sliding window, fitted with weather seals, 6mm plain glass with venetian blinds
<p align="center"><u>Equipment</u></p> Zea. 1.5-Tons/18000 Btu-hr. Aircond. window unit 'Carrier'	



Electrical Layout.....

LEGEND	
	Single, Double Gang Switches
	13A Double Switched Socket
	15A Single Switched Socket
	Bulkhead Light IP54
	2x36W Double Fluorescent Light Fixture
	Distribution Panel
	Window Air-Conditioner Unit

SUPPLIER:

MODEST COMPANY

P.O. BOX : 5741  
DUBAI, U.A.E  
JEBEL ALI Free Zone

TEL: 04-8814786  
FAX: 04-8812786



CLIENT:

Project Title:

40' x 12'  
Open Plan Office Unit

Drawing Name:

Floor + Electrical Plan

Date:

28-03-13

Size:

A4

Original Scale:

n.t.s.

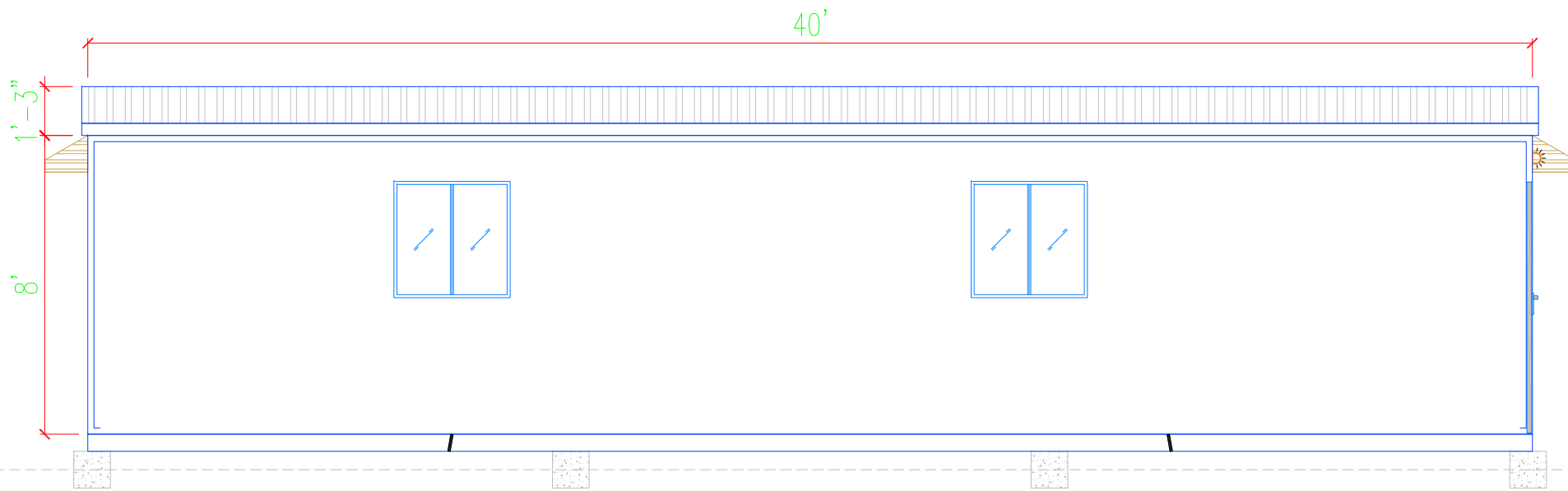
Designed:

mhz.

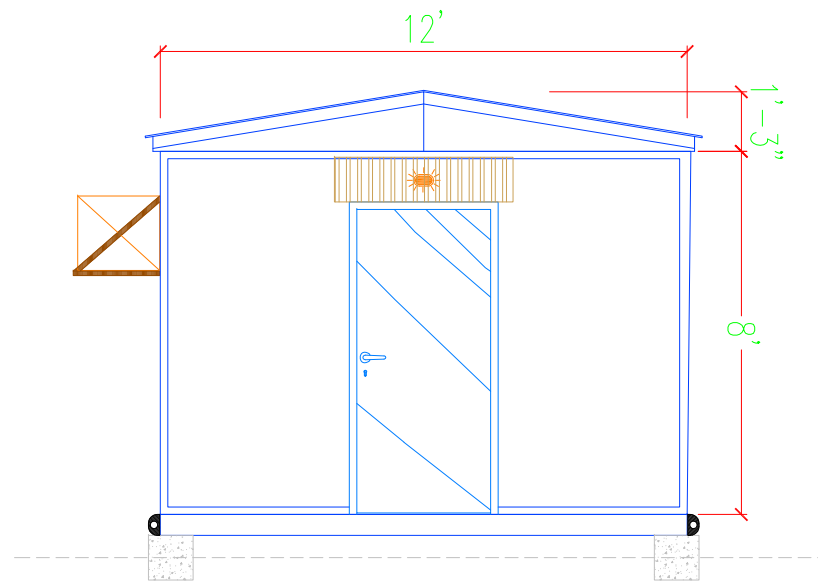
Drawing No:

PO207-01

Revision:



Front Elevation



Side Elevation

SUPPLIER:

MODEST COMPANY

P.O. BOX : 5741  
DUBAI, U.A.E  
JEBEL ALI Free Zone

TEL: 04-8814786  
FAX: 04-8812786



CLIENT:

Project Title:

40' x 12'  
Open Plan Office Unit

Drawing Name:

Elevations

Date:

28-03-13

Size:

A4

Original Scale:

n.t.s.

Designed:

mhz.

Drawing No:

PO207-02

Revision:



